



**SETTLE GRETEL** has made its way into the heart of the Carrum and Patterson Lakes community and couldn't be happier.

With a combined 30 years of hospitality experience, **Shannon & Harley** bring contemporary flair and passion for good food and service to your dining experience, along with flamboyant personalities and colourful outfits to match.

At Settle Gretel, we promise excellent coffee, a cool vibe and to become **your favourite** eatery and coffee house.

## D I N I N G   R O O M S

**Outside** - Seating up to 20 people

Set with pink flower boxes and tables, guests can dine on one large table or across multiple should you desire

**Green Room** - Seating up to 7 people

Get lost in wonderland with our upside-down garden. This space is perfect for intimate gatherings, seating up to 7 people

**Pink Room** - Seating up to 9 people

Feel prettier than Julie Roberts in our pink room. This space is perfect for intimate gatherings, seating up to 9 people

**Want to celebrate by the river?**

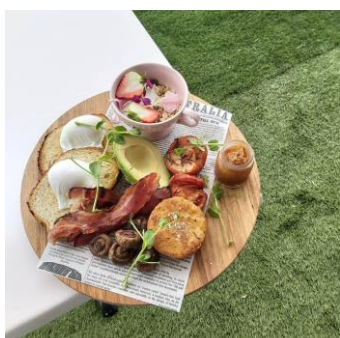
We can now offer a great function space near Patterson River in the help of Settle by the River & River Life Victoria



- ☎ 03 8772 2060
- ✉ hello@settlegretel.com.au
- 🌐 settlegretel.com.au
- 📍 63 McLeod Rd Carrum VIC 3197
- 📱 @settlegretel.cafe

ABN: 59 475 968 861





## G R A Z I N G T A B L E S

### Breakfast & Morning Tea

- Mini mango and coconut chia pudding pots, gf granola crunch and fresh fruit
- Mini yoghurt panna cottas, gf granola, fresh fruit, mango puree
- Scones with jam and cream
- Mini bacon & egg brioche rolls
- Assorted fruit danishes/pastries
- Seasonal fruit platter
- Juice jugs
- Espresso coffee or tea on arrival

\$30 per person

### Brunch

- Bircher muesli bowls
- Mini bacon and egg brioche rolls
- Mini quiches- Lorraine & vegetarian
- Scones with jam and cream
- Spring frittata slices- zucchini, peas, feta & sun-dried tomato
- Gourmet sandwiches- chicken, roast beef & vegetarian
- Assorted fruit danishes/ pastries
- Season fruit platter
- Juice jugs
- Espresso coffee or tea on arrival

\$36 per person

### Antipasto

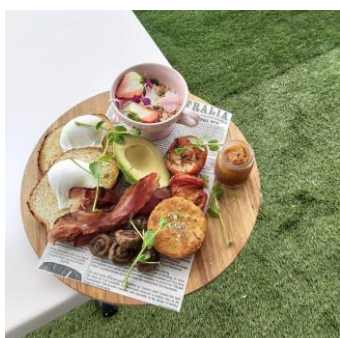
- Cold/cured meats
- Local and imported cheeses and fruit paste
- Roasted nuts, seasonal fresh/dried fruits, chocolate
- Dips/condiments, vegetable sticks
- Crisp breads/crackers and fresh bread
- Juice jugs
- Espresso coffee or tea on arrival

\$39 per person

Can be enjoyed at Settle Gretel or at your own venue – delivery/setup fee may apply

Dietaries can be catered for

**Prices based on minimum 6 people dining at Settle Gretel – please contact for a personalised quote**



## H I G H T E A

### Scones

- Served with Chantilly cream, jam & strawberries

### Finger sandwiches

- Smoked salmon, dill cream cheese, sliced cucumber
- Free range poached chicken, aioli, carrot, cos lettuce
- Roast pumpkin, rocket pesto, fetta
- Roast beef, house relish, rocket

### Savouries

- Mini quiche Lorraine
- Mini vegetable quiche
- Mini pork & fennel sausage rolls

### Sweets

- Selection of petite cakes and slices
- Seasonal fruit platter

### Beverages

- Espresso coffee or tea on arrival
- Selection of juice jugs

\$39 per person

Can be enjoyed at Settle Gretel or at your own venue –  
delivery/setup fee may apply  
Dietaries can be catered for

**Prices based on minimum 6 people dining at Settle Gretel –  
please contact for a personalised quote**



Settle

G R E T E L



## CATERING BOXES

### Wraps

- A mix of 3 half wraps (15 pieces)
- Flavours change seasonally – will include one vegetarian option

\$80 per box

### Antipasto

- Cold/cured meats
- Local and imported cheeses
- Seasonal fresh/dried fruits, pickles, olives
- Crisp breads/crackers

\$120 per box



### Sweets

- Chocolate brownie & carrot cake squares
- Orange & almond slice
- Macarons
- Bliss balls
- Strawberries, coconut wafer sticks

\$115 per box

### Fruit

- Seasonal sliced fruit

\$70 per box

Each box caters for 15 people  
Dietaries can be catered for

Delivery available – additional fee may apply

